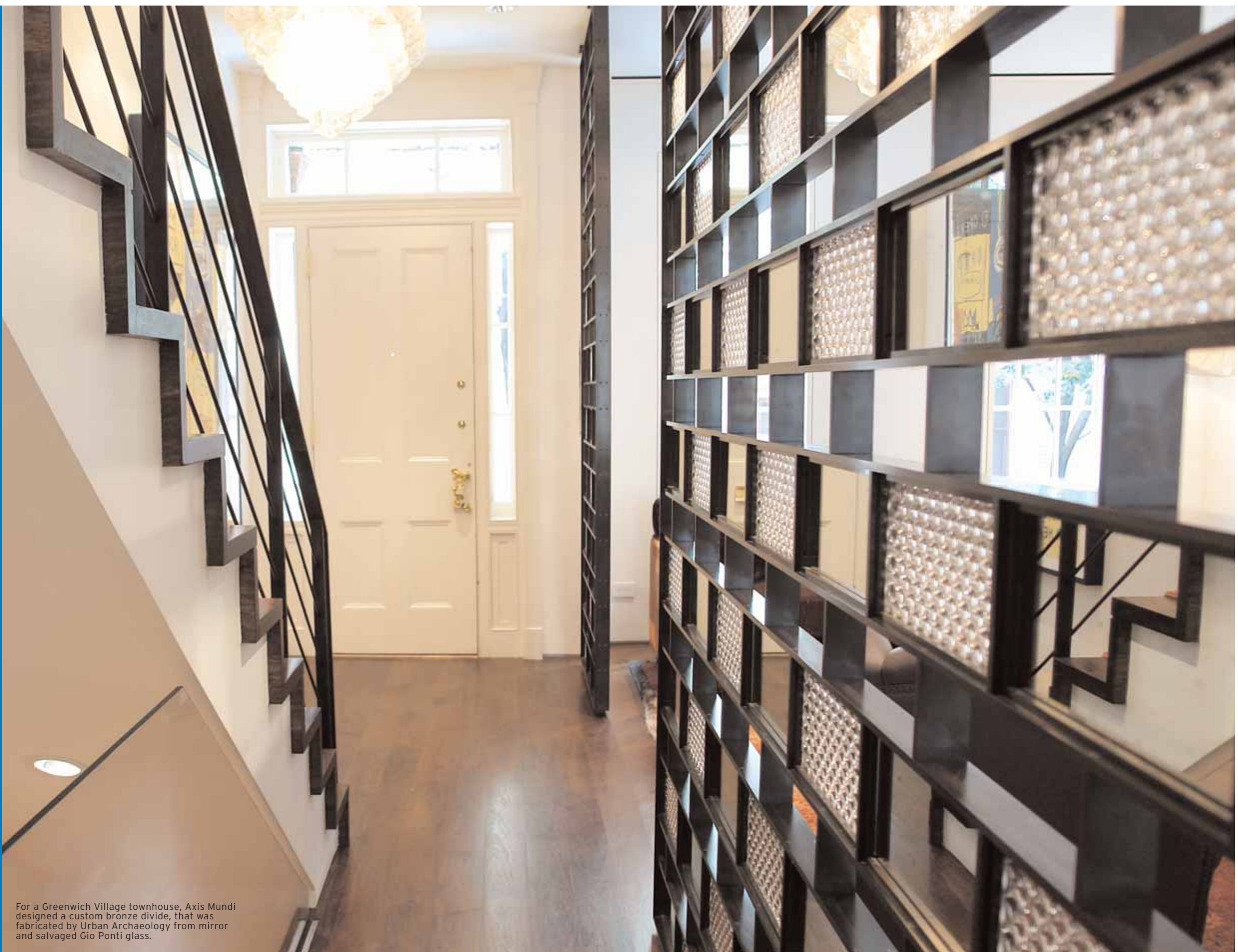


luxe modern

Axis Mundi



For a Greenwich Village townhouse, Axis Mundi designed a custom bronze divide, that was fabricated by Urban Archaeology from mirror and salvaged Gio Ponti glass.

Designer **John Beckmann** creates highly charged and

nuanced contemporary interiors.

T

There is a secret to the success of Axis Mundi, according to the firm's founder, John Beckmann. "Nothing is over-designed."

That's been true since 2000, when the multi-disciplinary firm Axis Mundi was launched. With Beckmann as the director of design and Richard Rosenbloom as architect-in-charge, the company has earned acclaim for its nuanced and well executed work, whether it be in architecture, interiors or furniture design. The New York Times, Metropolitan Home and Men's Vogue are just three of the publications that have recently taken notice of the firms sleek innovations and stunning interiors.

Beckmann and Rosenbloom stress the importance of working with a consistent coterie of artisans and tradespeople. After a few projects together, "they know what we're looking for, and that streamlines the design process." For instance, their contractor of choice is Taconic Builders, whose dedication to the construction process shows in the

final results. Likewise, vendors such as Christopher Hyland and CariniLang work with the firm because they tend to share a similar aesthetic.

At the firm's website, clients can browse through a range of projects and see how the firm creates unique works that evolve from a close reading of context. From an urban townhouse in Greenwich Village, to a rural retreat in upstate New York, Axis Mundi demonstrates their ability to connect with cultural roots while the consistency in the designs reflects their mantra of restraint. Beckmann often likes to quote Coco Chanel, who reportedly said "One gimmick per dress."

"I think there's a lot of work that's very cutting edge, but it dates quickly," Beckmann explains. "There's a luxurious aspect to our work that you don't see in really stripped-down 'minimalist' projects, and yet a very hip feeling that you don't find in over decorated spaces. I think it's important that we live in our own time, but make it timeless."

Beckmann quoted Coco Chanel, who used to say, "One gimmick per dress."



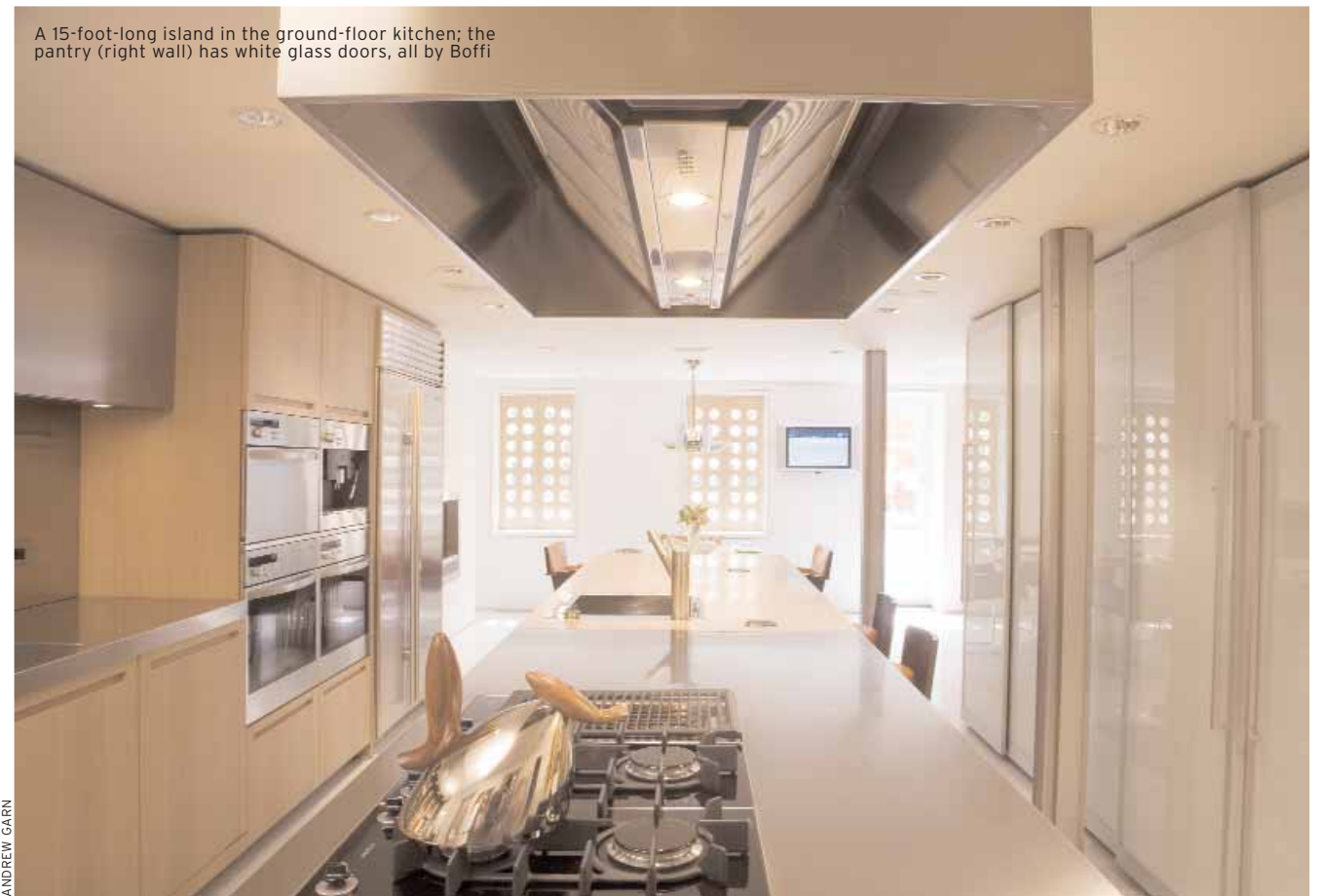
ANDREW GARN

The second-floor lounge features Dezza armchairs by Gio Ponti, a coffee table and lamp by Salvador Dalí, a silk Fishkin rug by Carini Lang and a Galileo sofa by Patrick Naggar from Ralph Pucci, French silk velvet from Christopher Hyland



ANDREW GARN

Uncle Sam by Andy Warhol overlooks the dining room, black lacquered Rossini table from Armani Casa; and chairs by Versace, the chandelier is by Dominique Perrault from Sawaya & Moroni.



ANDREW GARN

A 15-foot-long island in the ground-floor kitchen; the pantry (right wall) has white glass doors, all by Boffi



ANDREW GARN

The breakfast area features custom designed shutters with Jean Prouve inspired port-hole windows, an Italian 70s light fixture, armchairs from Sawaya and Moroni, and a Shiro Kuramata vase sits atop a John Boone Table



Beckmann's choices for the master bathroom include the sleek Boffi Monoblock bathtub, and custom designed marble mosaics fabricated by Urban Archeology

ANDREW GARN

Conceptual proposal for a Vertical House, or a townhouse in the country



RESOURCE GUIDE

Designer: John Beckmann and Richard L. Rosenbloom, Axis Mundi, 315 W. 39th St., Ste. 805, New York, NY 10018, 212.643.2608, www.axismundi.com
Contractor: Taconic Builders; 212.929.7811
Lighting consultant: Steve Katz, Lighting+Controls Solutions, 212.645.7700
Electronics: Custom Integrated Systems, 212.255.7991
Fireplaces: Chesney's, 646.840.0609

Bronze Screen and entry chandelier: Axis Mundi, manufactured by Urban Archeology, 212.431.4646
Custom silk carpets: Carini Lang, 646.613.0497
Wing chairs: Poltrona Frau USA
DR Chandelier: Dominique Perrault by Sawaya Moroni, through imoderni, 877.455.6350
DR Table: Armani Casa, 212.334.1271
Dining chairs: Versace, 212.317.0224

Coffee table: Salvador Dalí, through Karkula, 212.645.2216
Armchairs: Poltrona Frau USA, 212.777.7592
Sofa: Ralph Pucci, 212.633.0452
Sofa upholstery: Christopher Hyland, Inc., 212.688.6121
Cabinets, countertops, backsplash, hood: Boffi
Custom Marble Tiles: Urban Archeology
Tub and tub filler: Boffi, 212.431.8282